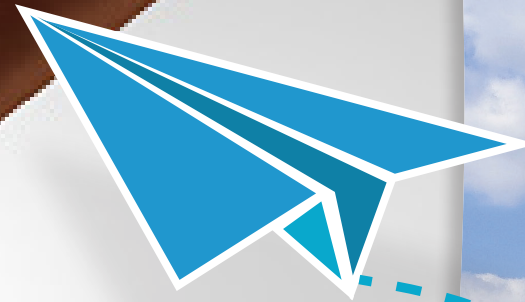




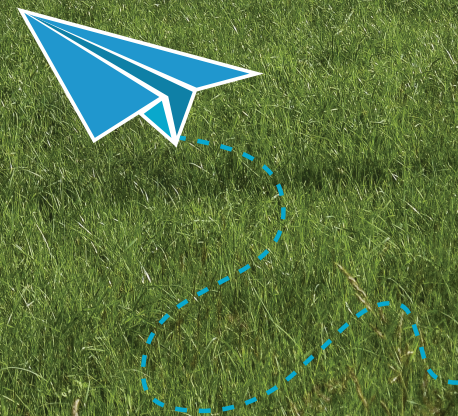
CALENDAR

JULY 1, 2022 - JUNE 30, 2023





**to all the students, teachers and schools
that participated in the poster contest.**





PROP

PROFESSIONAL RECYCLERS
OF PENNSYLVANIA

sponsored by Pennsylvania Department of Environmental Protection



Keep the earth clean and green!



Winner

Ava Fritz

North Star Middle School

7TH GRADE



July '22



SPONSORED BY PENNSYLVANIA DEPARTMENT
OF ENVIRONMENTAL PROTECTION

SUNDAY

MONDAY

TUESDAY

WEDNESDAY

THURSDAY

FRIDAY

SATURDAY

1

2

3

4 INDEPENDENCE DAY

5

6

7

8

9

10

11

12

13

14

15

16

17

18

19

20

21

22

23

24

25

26

27

28

29

30

31

BE EARTH'S SUPER HERO



Winner

Ava Itle

Saint Michael School

5TH GRADE



August '22



SPONSORED BY PENNSYLVANIA DEPARTMENT
OF ENVIRONMENTAL PROTECTION

| SUNDAY | MONDAY | TUESDAY | WEDNESDAY | THURSDAY | FRIDAY | SATURDAY |
|--------|--------|---------|-----------|----------|--------|----------|
| | 1 | 2 | 3 | 4 | 5 | 6 |
| 7 | 8 | 9 | 10 | 11 | 12 | 13 |
| 14 | 15 | 16 | 17 | 18 | 19 | 20 |
| 21 | 22 | 23 | 24 | 25 | 26 | 27 |
| 28 | 29 | 30 | 31 | | | |



Reuse


Give the world a chance

Electric not gas

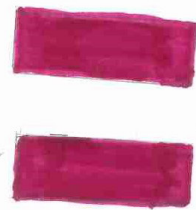
Convert "trash to treasure"

You too can make a difference

Consume less energy

Look for the 

Even the little things help



Winner

Christina Bouassaf
Penn Mont Academy

6TH GRADE

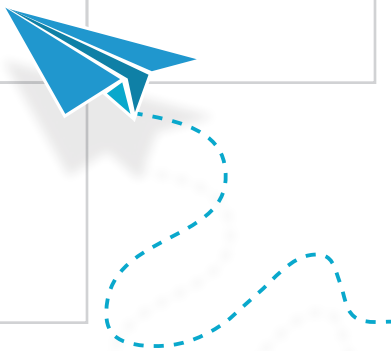


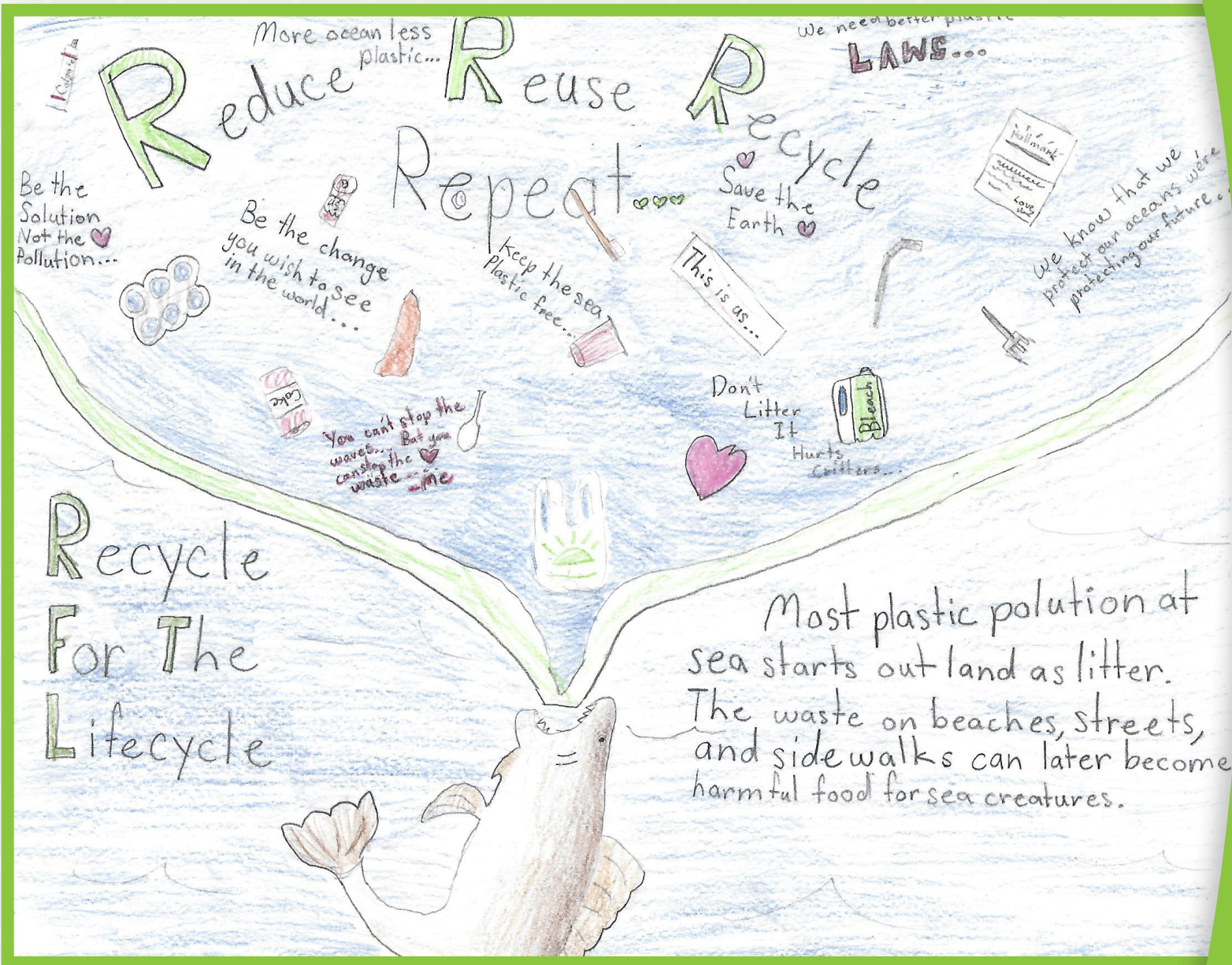
September '22



SPONSORED BY PENNSYLVANIA DEPARTMENT OF ENVIRONMENTAL PROTECTION

| SUNDAY | MONDAY | TUESDAY | WEDNESDAY | THURSDAY | FRIDAY | SATURDAY |
|----------------|--------|---------|-----------|----------|--------|----------|
| | | | | 1 | 2 | 3 |
| 4 LABOR DAY | 5 | 6 | 7 | 8 | 9 | 10 |
| 11 | 12 | 13 | 14 | 15 | 16 | 17 |
| 18 | 19 | 20 | 21 | 22 | 23 | 24 |
| 25 | 26 | 27 | 28 | 29 | 30 | |





Winner

Ella Beiswenger
Saint Michael School

5TH GRADE



October '22



SPONSORED BY PENNSYLVANIA DEPARTMENT OF ENVIRONMENTAL PROTECTION

SUNDAY MONDAY TUESDAY WEDNESDAY THURSDAY FRIDAY SATURDAY

| | | | | | | |
|----|--------------|----|----|----|----|----|
| | | | | | | 1 |
| 2 | 3 | 4 | 5 | 6 | 7 | 8 |
| 9 | 10 | 11 | 12 | 13 | 14 | 15 |
| 16 | 17 | 18 | 19 | 20 | 21 | 22 |
| 23 | 24 | 25 | 26 | 27 | 28 | 29 |
| 30 | 31 HALLOWEEN | | | | | |



Winner

Emma Stover

Jersey Shore Elementary

1ST GRADE



November '22



SPONSORED BY PENNSYLVANIA DEPARTMENT OF ENVIRONMENTAL PROTECTION

| SUNDAY | MONDAY | TUESDAY | WEDNESDAY | THURSDAY | FRIDAY | SATURDAY |
|--------|--------|---------|-----------|---------------------|--------|----------|
| | | 1 | 2 | 3 | 4 | 5 |
| 6 | 7 | 8 | 9 | 10 | 11 | 12 |
| 13 | 14 | 15 | 16 | 17 | 18 | 19 |
| 20 | 21 | 22 | 23 | 24 THANKSGIVING DAY | 25 | 26 |
| 27 | 28 | 29 | 30 | | | |



Recycling is **S.M.A.R.T.**

S.
Save the planet by recycling

M.
Minimize the amount of land fill usage and littering

A.
Altering an objects structure is needed to change it into something new

R.
Reduce the amount of carbon dioxide in the atmosphere

T.
Transform an item into something else that way it may be used again



Winner

Hunter Trout
Ramsay Elementary

4TH GRADE



December '22



PROP
PROFESSIONAL RECYCLERS
OF PENNSYLVANIA

SPONSORED BY PENNSYLVANIA DEPARTMENT
OF ENVIRONMENTAL PROTECTION

| SUNDAY | MONDAY | TUESDAY | WEDNESDAY | THURSDAY | FRIDAY | SATURDAY |
|------------------|--------|---------|-----------|----------|--------|----------|
| | | | | 1 | 2 | 3 |
| 4 | 5 | 6 | 7 | 8 | 9 | 10 |
| 11 | 12 | 13 | 14 | 15 | 16 | 17 |
| 18 | 19 | 20 | 21 | 22 | 23 | 24 |
| 25 CHRISTMAS DAY | 26 | 27 | 28 | 29 | 30 | 31 |

We are the green team!



Winner

Kendall Exler
George Washington
Elementary

3RD GRADE



January '23



PROP
PROFESSIONAL RECYCLERS
OF PENNSYLVANIA

SPONSORED BY PENNSYLVANIA DEPARTMENT
OF ENVIRONMENTAL PROTECTION

| SUNDAY | MONDAY | TUESDAY | WEDNESDAY | THURSDAY | FRIDAY | SATURDAY |
|---------------------|--------------------------------------|---------|-----------|----------|--------|----------|
| 1 NEW YEAR'S DAY | 2 | 3 | 4 | 5 | 6 | 7 |
| 8 | 9 | 10 | 11 | 12 | 13 | 14 |
| 15 | 16 MARTIN LUTHER KING, JR. DAY | 17 | 18 | 19 | 20 | 21 |
| 22 | 23 | 24 | 25 | 26 | 27 | 28 |
| 29 | 30 | 31 | | | | |



Winner

Kierra Kelly
George Washington
Elementary

3RD GRADE



February '23



SPONSORED BY PENNSYLVANIA DEPARTMENT OF ENVIRONMENTAL PROTECTION

| SUNDAY | MONDAY | TUESDAY | WEDNESDAY | THURSDAY | FRIDAY | SATURDAY |
|--------|--------|--------------------|-----------|-----------------|--------|----------|
| | | | 1 | 2 GROUNDHOG DAY | 3 | 4 |
| 5 | 6 | 7 | 8 | 9 | 10 | 11 |
| 12 | 13 | 14 VALENTINE'S DAY | 15 | 16 | 17 | 18 |
| 19 | 20 | 21 | 22 | 23 | 24 | 25 |
| 26 | 27 | 28 | | | | |



Recycling Works

Benefits of Recycling

- Reduces the amount of waste sent to landfills and incinerators.
- Conserves natural resources such as timber, water and minerals.



Benefits of Recycling

- Increases economic security by tapping a domestic source of materials.
- Prevents pollution by reducing the need to collect new raw materials.



Winner

Lilliana
"Lilly" Lohsl

Penn Mont Academy

6TH GRADE

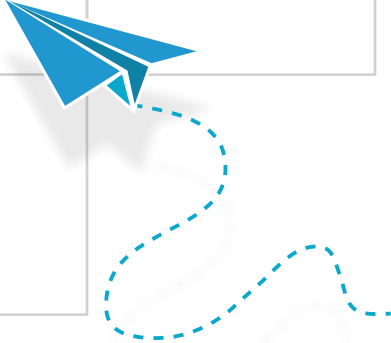


March '23



SPONSORED BY PENNSYLVANIA DEPARTMENT OF ENVIRONMENTAL PROTECTION

| SUNDAY | MONDAY | TUESDAY | WEDNESDAY | THURSDAY | FRIDAY | SATURDAY |
|--------|---------------------------------------|---------|-----------|----------|--------|----------|
| | | | 1 | 2 | 3 | 4 |
| 5 | 6 | 7 | 8 | 9 | 10 | 11 |
| 12 | 13 | 14 | 15 | 16 | 17 | 18 |
| 19 | 20 <small>FIRST DAY OF SPRING</small> | 21 | 22 | 23 | 24 | 25 |
| 26 | 27 | 28 | 29 | 30 | 31 | |



How to Recycle a Plastic water Bottle



Once you finish drinking your water you may want to put it in the trash. But there is a better way way to get rid of your water Bottle

And the answer is **Recycle**

- Step.1- Finish drinking your water
Step.2- Don't even think about throwing it away
Step.3- Find a recycling bin and throw it in there

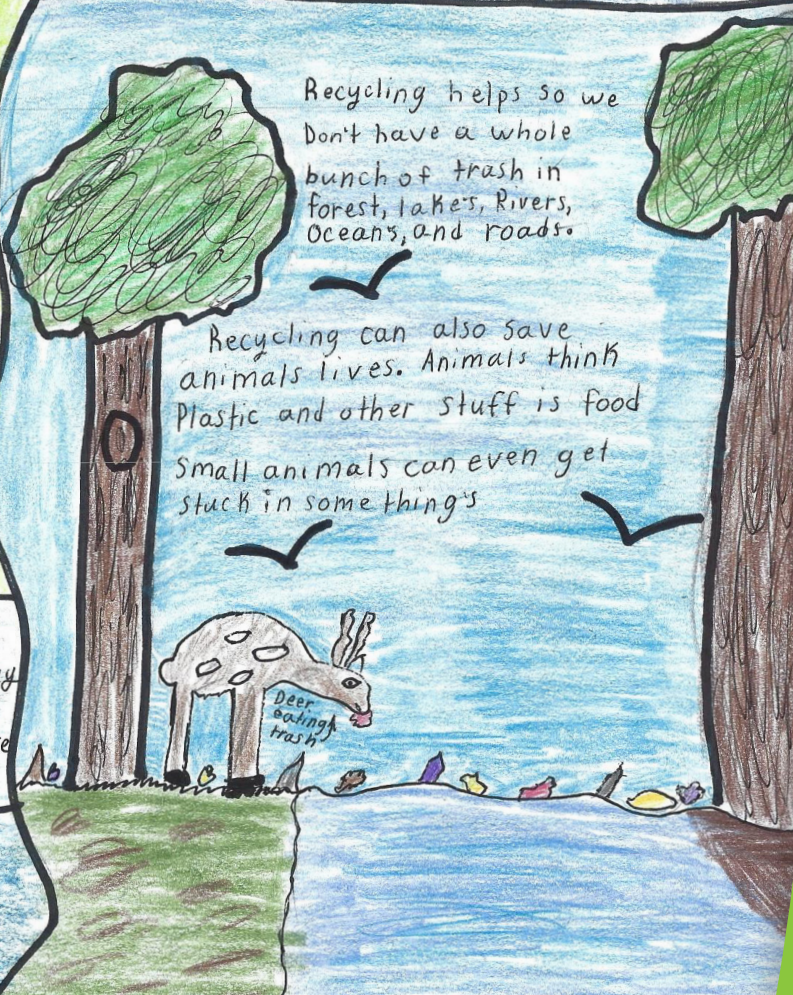
Fun Facts about recycling:

1. Use cloth towels instead of paper towels
2. Shop for products made for recycled material
3. You can also compost

How Recycling Helps the Environment

Recycling helps so we don't have a whole bunch of trash in forest, lakes, rivers, oceans, and roads.

Recycling can also save animals lives. Animals think plastic and other stuff is food. Small animals can even get stuck in some things



Winner

Mia Anderson

Ramsay Elementary

4TH GRADE



April '23



SPONSORED BY PENNSYLVANIA DEPARTMENT
OF ENVIRONMENTAL PROTECTION

SUNDAY

MONDAY

TUESDAY

WEDNESDAY

THURSDAY

FRIDAY

SATURDAY

1

2

3

4

5

6

7

8

9

10

11

12

13

14

15

16

EASTER SUNDAY

17

18

19

20

21

22

23

24

25

26

27

28

29

30



Winner

Oyayi Magno
Erie Day School

3RD GRADE



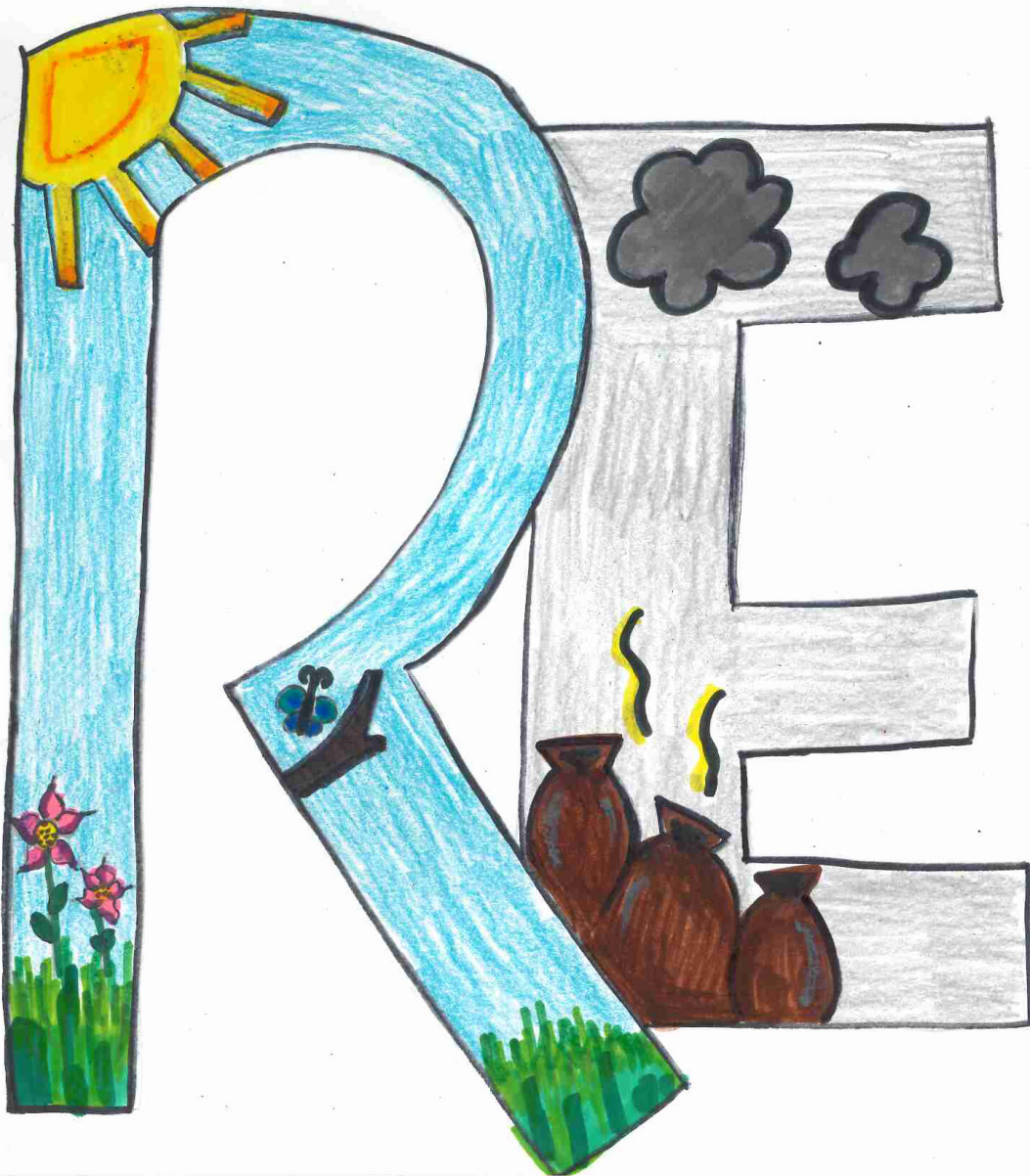
May '23



SPONSORED BY PENNSYLVANIA DEPARTMENT OF ENVIRONMENTAL PROTECTION

| SUNDAY | MONDAY | TUESDAY | WEDNESDAY | THURSDAY | FRIDAY | SATURDAY |
|-----------------|--------|---------|-----------|----------|--------|----------|
| | 1 | 2 | 3 | 4 | 5 | 6 |
| 7 | 8 | 9 | 10 | 11 | 12 | 13 |
| 14 MOTHER'S DAY | 15 | 16 | 17 | 18 | 19 | 20 |
| 21 | 22 | 23 | 24 | 25 | 26 | 27 |
| 28 | 29 | 30 | 31 | | | |





Use
DUCE
cycle
repeat



Winner

Samira Patel
Penn Mont Academy

5TH GRADE

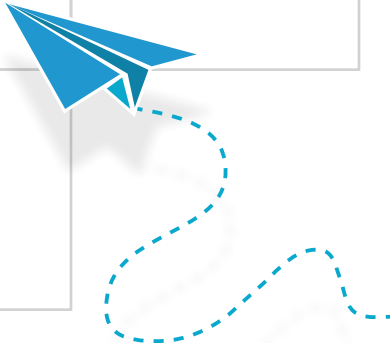


June '23



SPONSORED BY PENNSYLVANIA DEPARTMENT OF ENVIRONMENTAL PROTECTION

| SUNDAY | MONDAY | TUESDAY | WEDNESDAY | THURSDAY | FRIDAY | SATURDAY |
|-----------------|------------------------|---------|-----------|----------|--------|----------|
| | | | | 1 | 2 | 3 |
| 4 | 5 | 6 | 7 | 8 | 9 | 10 |
| 11 | 12 | 13 | 14 | 15 | 16 | 17 |
| 18 FATHER'S DAY | 19 FIRST DAY OF SUMMER | 20 | 21 | 22 | 23 | 24 |
| 25 | 26 | 27 | 28 | 29 | 30 | |





908 N Second Street | Harrisburg PA 17102 | 717.441.6049

